

R O W A N



# Bunting

By Sarah Hatton



# Bunting

by Sarah Hatton



## YARN

### Handknit Cotton

A	Cloud*	345	1	x 50gm
B	Atlantic*	346	1	x 50gm
C	Sugar	303	1	x 50gm
D	Florence*	350	1	x 50gm
E	Celery*	309	1	x 50gm
F	Sunshine*	354	1	x 50gm
G	Burnt*	343	2	x 50gm
H	Ecrú	251	2	x 50gm
I	Sea Foam*	352	1	x 50gm

Please note some of the above shades have been substituted from original photography, as some of the original shades are now discontinued. Shades marked with \* are the new substitute shades.

## NEEDLES

1 pair 4mm (no 8) (US 6) needles

## TENSION

20 sts and 28 rows to 10cm over st st on 4mm (US 6) needles.

### PIECE A (MAKE 3)

Using H cast on 20 sts.

Starting with a knit row, work 28 rows in st st.

Cast off.

### Edging

With RS facing, using yarn F, pick up and knit 20 sts along cast on edge of square.

Knit 2 row.

**Next Row( RS)** Sl 1, k1, pss0, knit to last 2 sts, k2tog.

### Next Row. Knit.

Repeat these 2 rows, ending with a RS row until there are 2 sts.

**Next row. (WS).** K2tog. Fasten off.

### PIECE B (MAKE 3)

Using B cast on 20 sts.

Working in stripe pattern of 2 rows in B, 2 rows in H, work 28 rows in st st.

Cast off.

### Edging

Using C work as given for edging of piece A.

### PIECE C (MAKE 3)

Using B cast on 20 sts.

Working in stripe pattern of 2 rows in A, 2 rows in B, and 2 rows in I work 28 rows in st st.

Cast off.

### Edging

Using H work as given for edging of piece A.

### PIECE D (MAKE 3)

Using G cast on 21 sts.

Work as given for chart A.

Cast off.

### Edging

Using E work as given for edging of piece A.

### PIECE E (MAKE 3)

Using G cast on 21 sts.

Work as given for chart B.

Cast off.

## Edging

Using A work as given for edging of piece A.

## PIECE F (MAKE 3)

Using H cast on 21 sts.





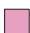




Work as given for chart A.

Cast off.

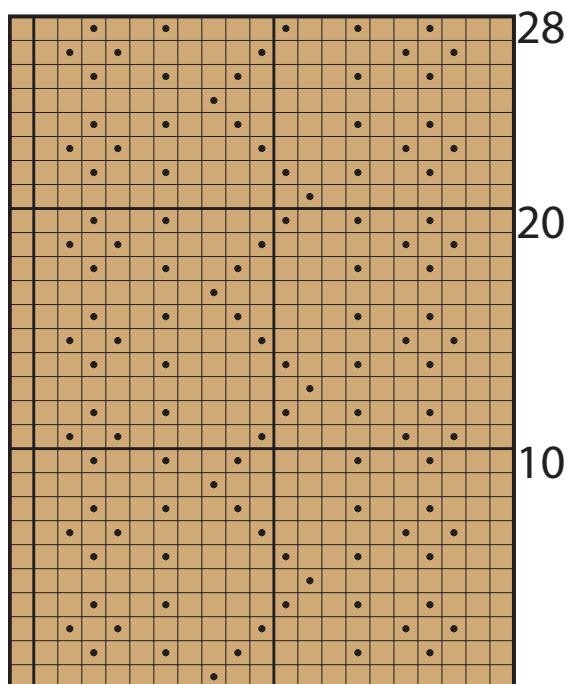
## Edging

Using F work as given for edging of piece A.

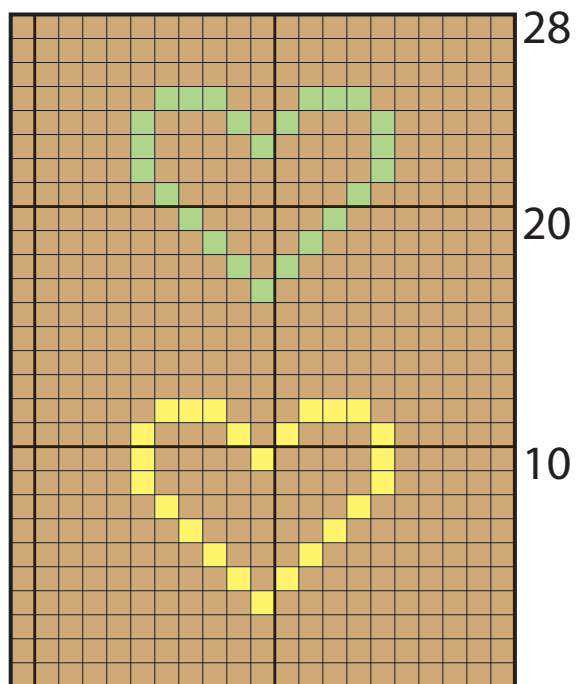
### Key

	K on RS, P on WS		E
	P on RS, K on WS		F
	C		G
	D		H
			I

## Chart A



## Chart B



## Chart C

